

## Introduction

Artists typically place objects near the center of a picture, presumably because we center objects in our field of view when we look at them in real life. Yet, Japanese artists routinely place objects off-center, either close to or at the picture's edge. This practice creates a more dynamic picture by suggesting that these objects have just come into view, either because they are moving or that we have just noticed them out of the corner of our eye as we scan a scene. Twenty examples of these "edgy" pictures, each designed by a different Japanese artist, are presented in this virtual exhibition. These "edgy" pictures are part of the Reader Collection of Japanese Art which focuses on printed flower and bird art. Birds are the artists' subject of interest in these prints. For each picture the following information is provided: name of the artist and the bird depicted (if known), picture source if it was included in a book, print date and title (if any), printing method and print size. Pictures with birds close to the top and left edges are presented first followed by others in which birds are closer to other edges, moving in a clockwise direction.

1 **Shigeyuki Ōhashi** –  
unknown bird, 1987,  
entitled white bird VI,  
screenprint, 260 x 270 mm



H.C. *White bird VI*

2 **Kaoru Kawano** –  
red-crowned crane (*Grus japonensis*), woodblock  
print, 290 x 420 mm



3 **Seitei Watanabe** – great tit (*Parus major*), included in Kachō Jō (Album of Flowers and Birds), 1903, woodblock print, 275 x 210 mm



4 Hiroshige Utagawa – golden eagle (*Aquila chrysaetos*), 1856, entitled Fukugawa Susaki and Jūmansubō, woodblock print, 220 x 340 mm



5 **Koson Ohara** –  
lesser cuckoo (*Cuculus  
poliocephalus*),  
woodblock print, 285 x  
275 mm

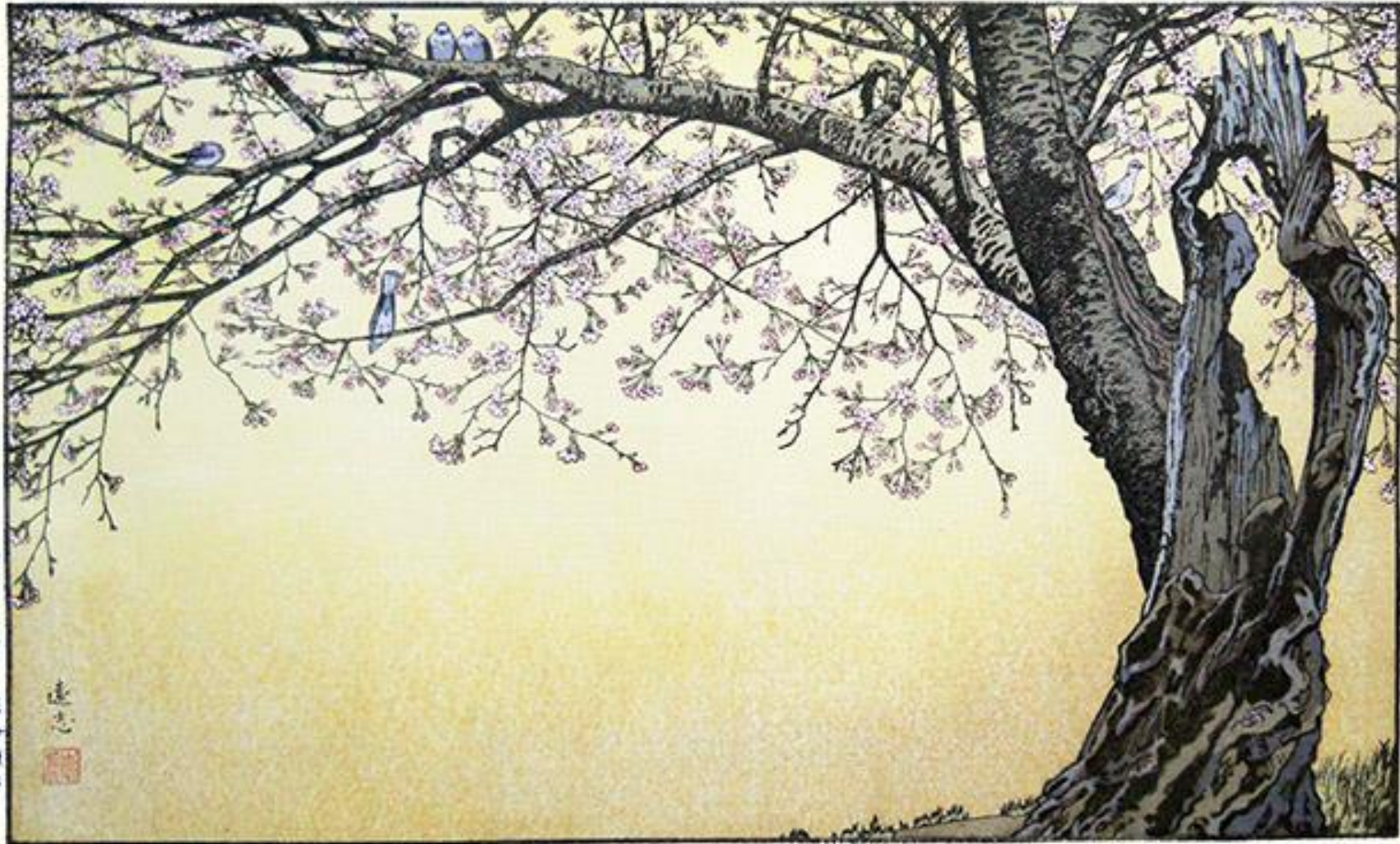


6 **Zeshin Shibata** –  
large-billed crow (*Corvus  
macrorhynchos*),  
woodblock print, 260 x  
245 mm





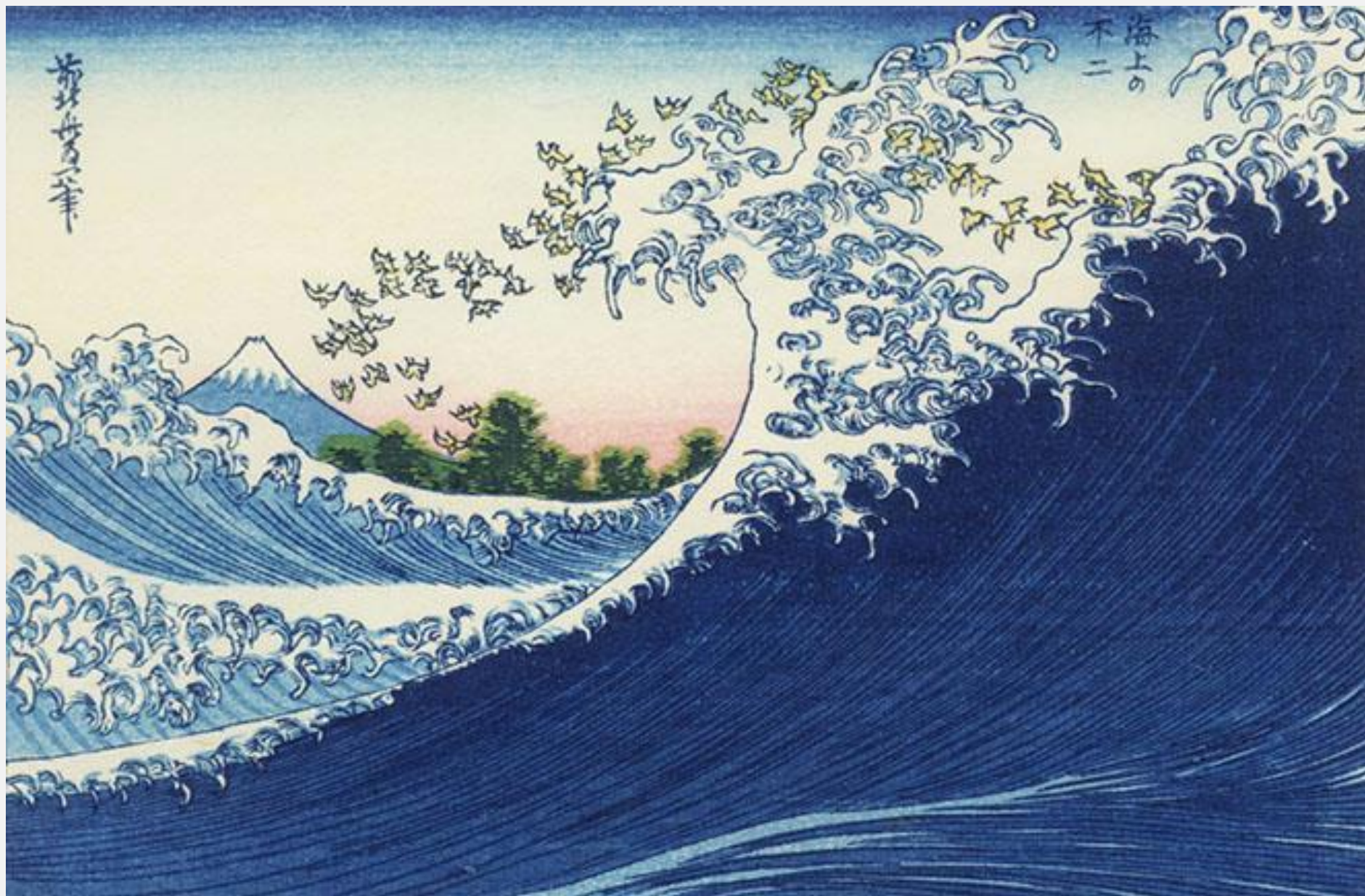
7 **Tōshi Yoshida** – oriental turtle-dove (*Streptopelia orientalis*), 1970, entitled cherry blossoms, woodblock print, 560 x 360 mm



Cherry Blossoms

Tōshi Yoshida

8 **Hokusai Katsushika** – little ringed plover (*Charadrius dubius*), 1834, entitled Fuji at sea, woodblock print, 150 x 105 mm



9 **Sadanobu II Hasegawa** – barn swallow (*Hirundo rustica*), woodblock print, 285 x 230 mm



10 **Tamami Shima** –  
unknown bird, 1961,  
entitled ascension,  
woodblock print, 430 x  
600 mm



11 **Sōzan Itō** –  
crow (*Corvus* sp.),  
woodblock print,  
105 x 200 mm



12 **Satarō Nagao** –  
varied tit (*Sittiparus  
varius*), 1891, included  
in Kachō Sōmoku  
Saishiki Gafu (Dainty  
Picture Album of  
Flowers, Birds and  
Plants), woodblock  
print, 120 x 180 mm



13 **Tadashirō Fukui** – red-crowned crane (*Grus japonensis*), 1990, entitled fly, intaglio print, 310 x 230 mm



飛 17 2

Tadashirō Fukui 1990

14 Saburō Hattori –  
hawk (*Accipiter* sp.),  
screenprint, 275 x 340  
mm





15 **Tadashi Ikai** – common kingfisher (*Alcedo atthis*), entitled river breeze, intaglio print, 440 x 300 mm



川風

16 **Ryōhei Tanaka** – rock dove (*Columba livia*), 2010, entitled stone paving, intaglio print, 300 x 255 mm



15/30

Ryōhei Tanaka 2010

17 **Hidetaka Yamanaka** -  
Japanese white-eye  
(*Zosterops japonicus*),  
2005, entitled cold wind,  
intaglio print, 250 x 345  
mm

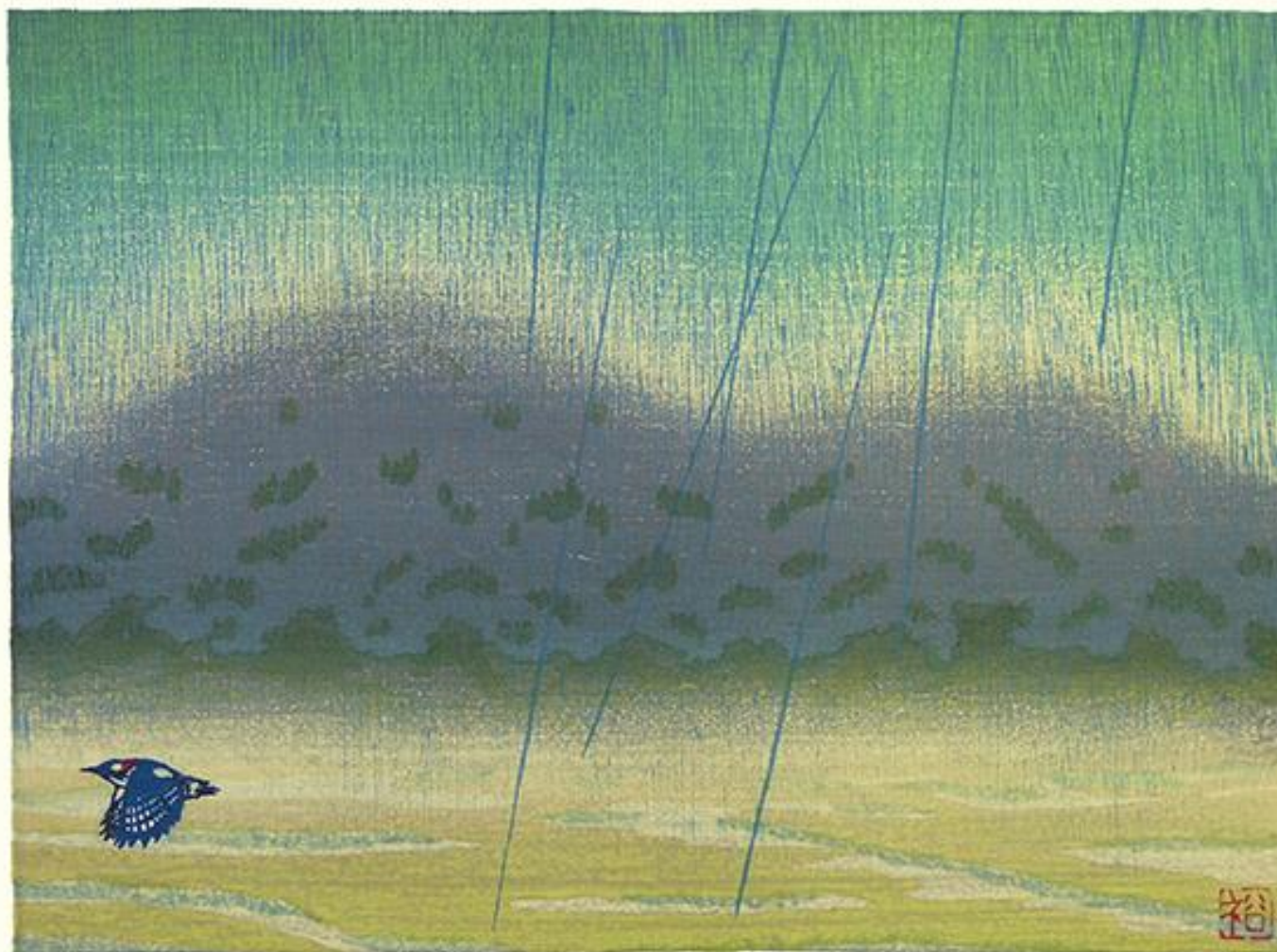


冬

寒風

—o-ya

18 **Hirokazu Fukuda** - greater-spotted woodpecker (*Dendrocopos major*), entitled gentle rain, woodblock print, 325 x 250 mm



雨 221/250 裕

19 **Izumi Fujita** -  
long-tailed duck (*Clangula  
hyemalis*), entitled  
between the waves long-  
tailed duck, woodblock  
print, 320 x 400 mm



20 **Hōbun Kikuchi** –  
barn swallow (*Hirundo  
rustica*), 1890, included in  
Hōbun Gafu (Picture  
Album by Hōbun),  
woodblock print, 165 x  
240 mm



[Back to Exhibitions](#)